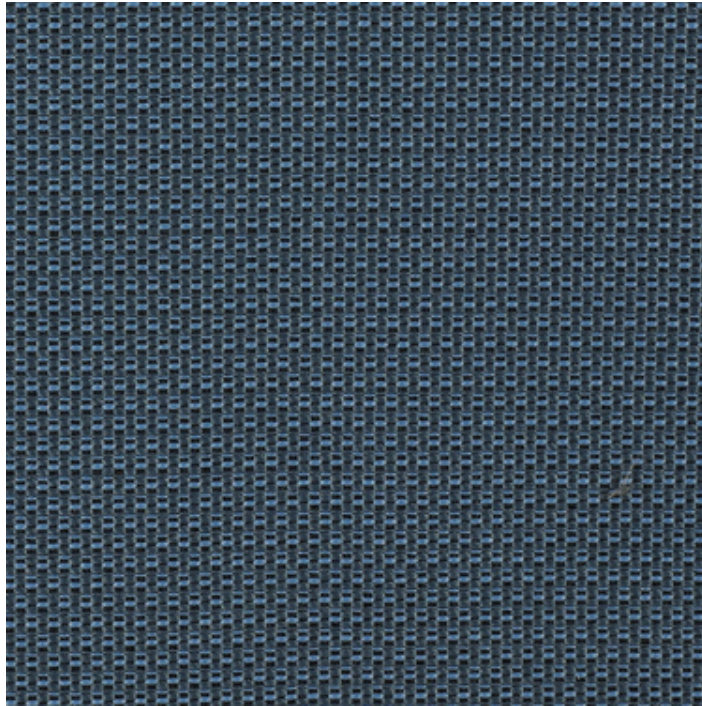


# Epic – Product Specifications



**Pattern:** Epic  
**Color:** Azure  
**Product Number:** 09126192

**Content:** 50% Polyester; 32% Post Industrial Recycled Polyester; 18% Post Consumer Recycled Polyester

**Reduced Environmental Impact:** Recycled Fiber Content; GREENGUARD Gold Certified; NSF 336 Compliant

**Repeat:** 3/8" V, 1/8" H

**Railroaded:** No

**Dye:** Yarn

**Backing:** Acrylic

**Finish:** -

**Durability:** 100,000 D.R.

**Flame Resistance:** CA Bulletin 117 2013; UFAC Class 1

**Width:** 54"

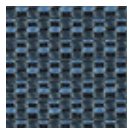
**Weight:** 1.25 lb.

**Maintenance:** WS - Water-Based Cleaning Agents OR Foam

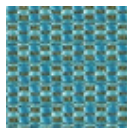
**Proprietary:** ©2011



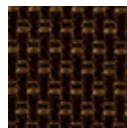
Multiple factors affect fabric durability and appearance retention, including end-user application and proper maintenance. Wyzenbeek results above 100,000 double rubs have not been shown to be an indicator of increased lifespan.



Azure



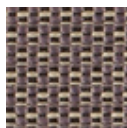
Capri



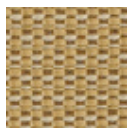
Espresso



Flare



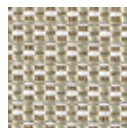
Granite



Jute



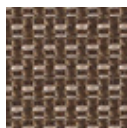
Kiwi



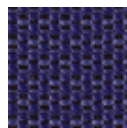
Limestone



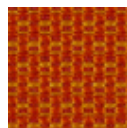
Pearl



Porcini



Regal



Slice



Steel

[print \[ > \]](#)

[close](#)