

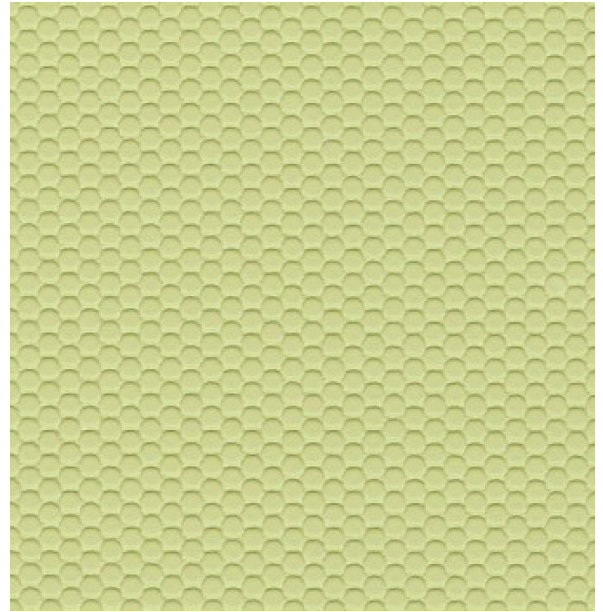
# Dot Com



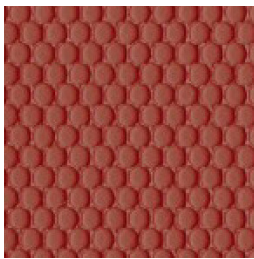
# CULP CONTRACT



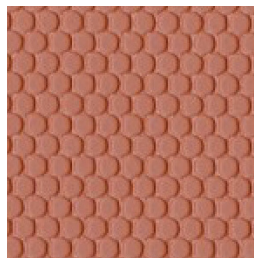
Batik



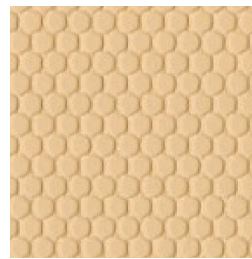
Lawn



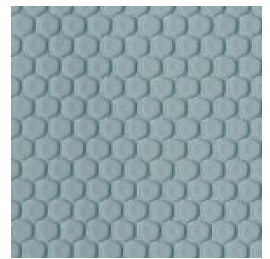
Cinnabar



Clay



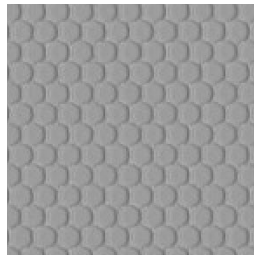
Honey



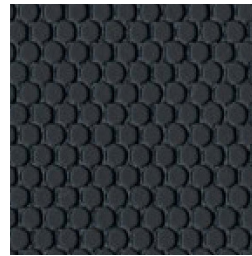
River



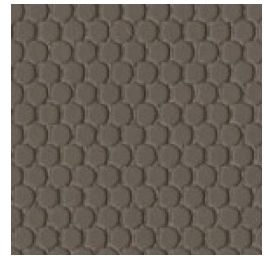
Platinum



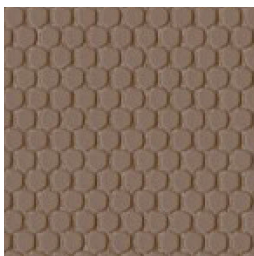
Gray



Black



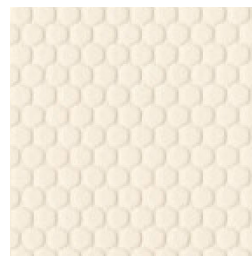
Coin



Cola



Fawn



Nude



White

\*Digital fabric cards/swatches may not be true representations of color. We recommend ordering vendor samples to ensure color correctness.

# Dot Com

Content:	100% Polyurethane
Backing:	85% Polyester, 15% Cotton
Finish:	Antimicrobial
Weight:	24.3 oz. per linear yard
Width:	54"
Abrasion:	Heavy Duty – Exceeds 200,000 Cycles (Wyzenbeek – Cotton Duck Abradant) (ASTM D4157)
Light Fastness:	Class 4/40 hrs. min. (AATCC16A)
Color Fastness:	Class 4 (ASTM D3597, AATCC 8) Wet Class 4 (ASTM D3597, AATCC 8) Dry
Physical Properties:	Class 4 (ASTM D3511) Brush Pill 75 lbs. warp, 111 lbs. weft (ASTM D 5034) Breaking Strength 36 lbs. warp, 61 lbs. weft (ASTM D 4034) Seam Slippage 50,000 Cycles (CFFA 10) Flex Resistance Pass (CFFA 6a) Cold Crack Pass (ISO 1419) 5 weeks
Passes:	California Tech. Bulletin #117 – 2013 UFAC Class 1 NFPA 260 Class 1 MVSS 302
Cleanability:	WS - Both water and solvent based solutions.
Environmental Benefit:	PVC Free
Origin:	Made in China

**CULP**  
CONTRACT

For samples or further information, please contact:  
Culp, Inc.  
Contract Fabrics  
1823 Eastchester Drive  
High Point, NC 27265  
Phone: (336) 889-5161  
Fax: (336) 899-7848  
[www.culpcontract.com](http://www.culpcontract.com)

5-24-2016

Grade **5**